

## CRAFTSMAN



**STORIES**

Two

**SQ FT**

4,008

**BED**

5

**BATH**

3.5

\*All renderings are artists' conception. Continuing a policy of constant design and pricing improvement, we reserve the right of price, product or design change without obligation to notify. Please refer to the base plan for an accurate depiction of the exterior standard features.  
\*Home square footages are approximates and are subject to change.

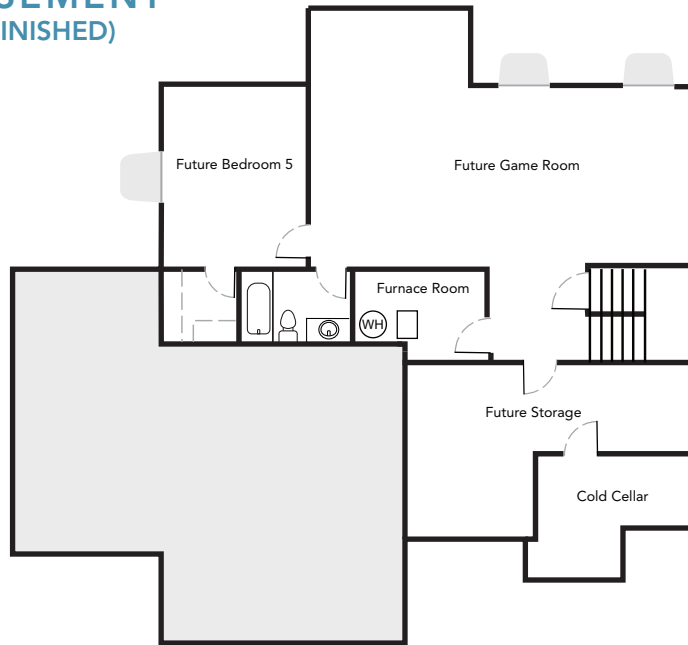
**SALES: 801.905.8000**

[SYMPHONYHOMES.COM](http://SYMPHONYHOMES.COM)

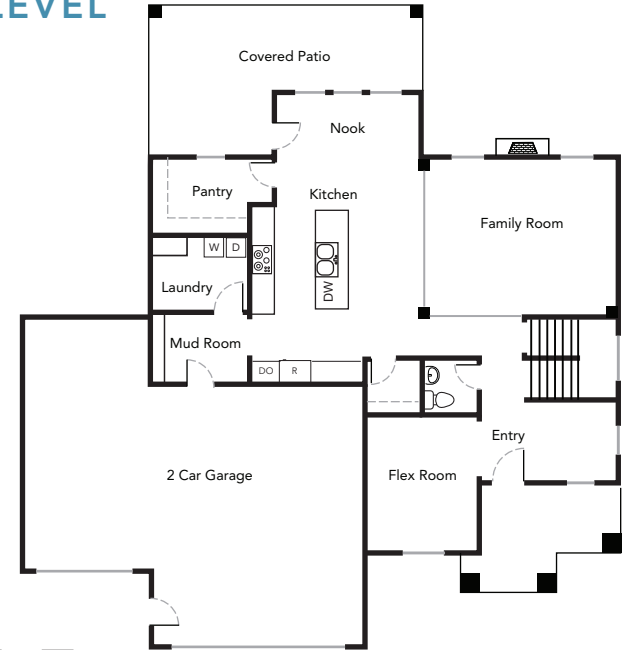
\*Home square footages are approximates and are subject to change.



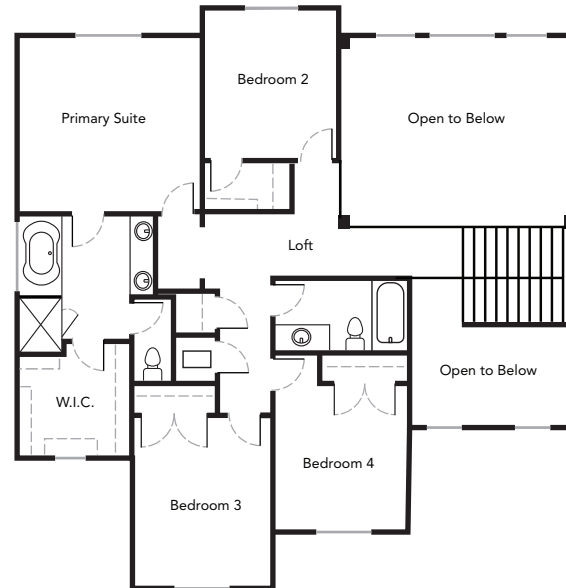
## BASEMENT (UNFINISHED)



## MAIN LEVEL



## UPPER LEVEL



SQUARE FOOTAGE

MAIN: 1,338

UPPER: 1,225

BASEMENT: 1,445 (UNFINISHED)

SALES: 801.905.8000

[SYMPHONYHOMES.COM](http://SYMPHONYHOMES.COM)

\*Home square footages are approximates and are subject to change.