



**STORIES**

Two-Story

**SQ. FT.**

6468

**BED**

6

**BATH**

4.5

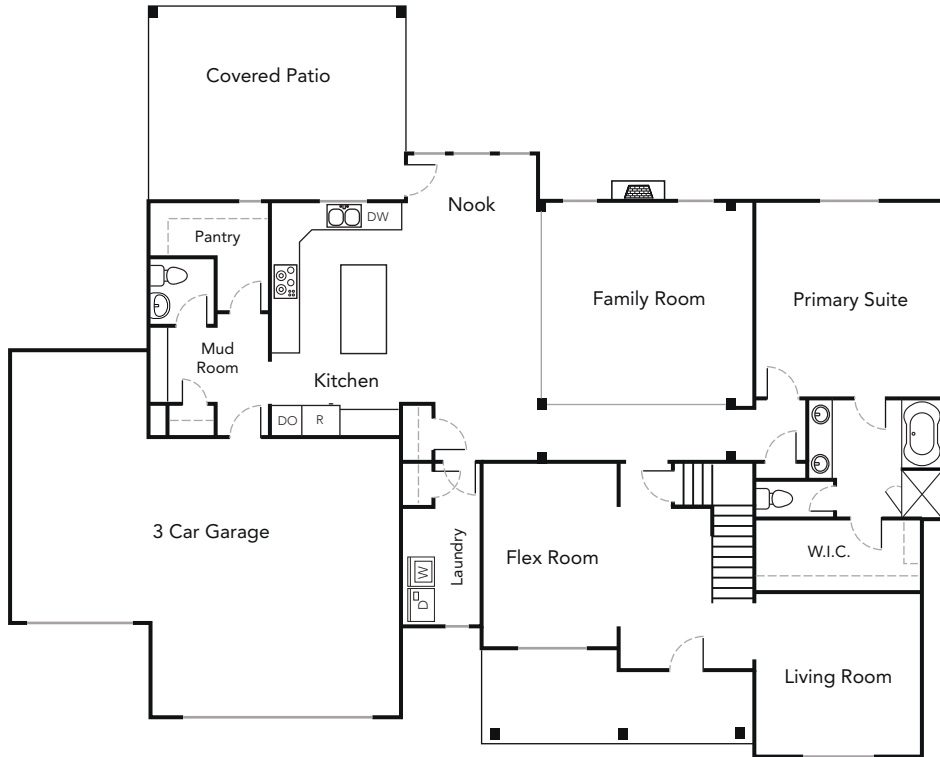
\*All renderings are artists' conception. Continuing a policy of constant design and pricing improvement, we reserve the right of price, product or design change without obligation to notify. Please refer to the base plan for an accurate depiction of the exterior standard features.  
\*Home square footages are approximates and are subject to change.

**SALES: 801.905.8000**

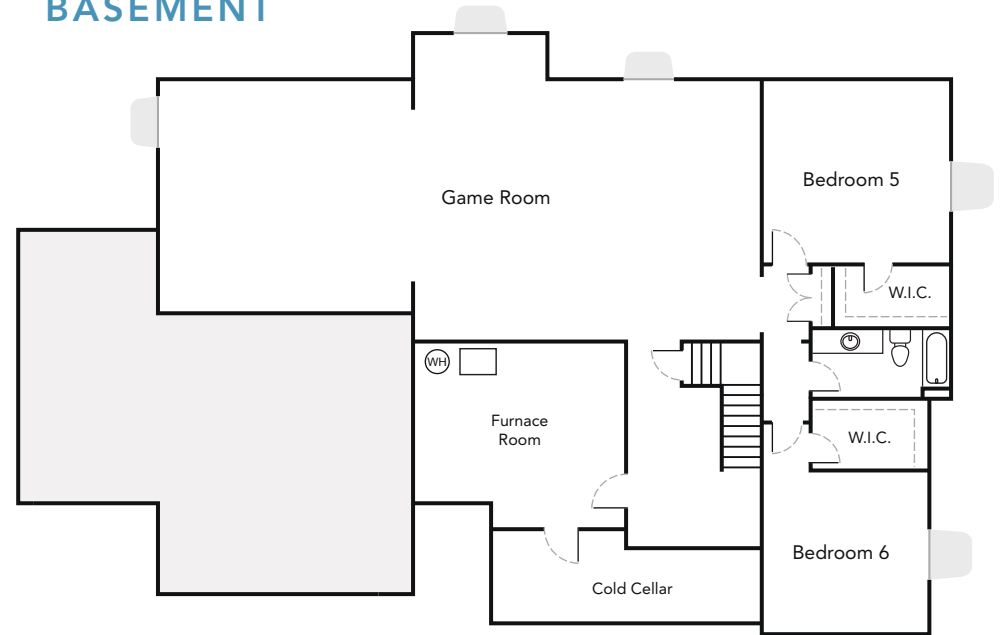
[SYMPHONYHOMES.COM](http://SYMPHONYHOMES.COM)



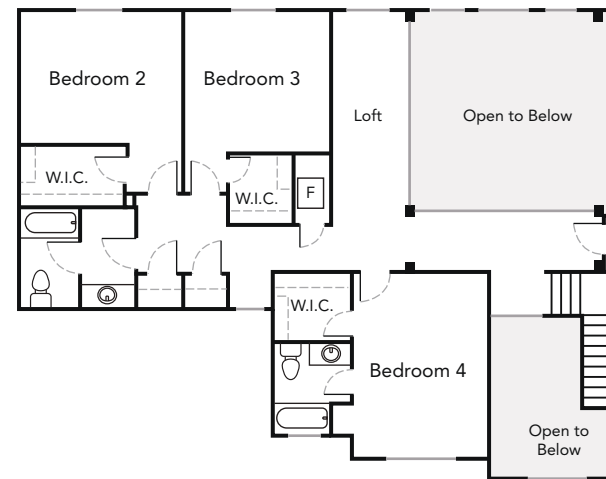
## MAIN LEVEL



## BASEMENT



## UPPER LEVEL



**SQUARE FOOTAGE**

**MAIN: 2489**

**BASEMENT: 2649**

**UPPER: 1330**

**SALES: 801.905.8000**

[SYMPHONYHOMES.COM](http://SYMPHONYHOMES.COM)

\*Home square footages are approximates and are subject to change.



**STORIES**

Two-Story

**SQ FT**

6778

**BED**

6

**BATH**

4.5

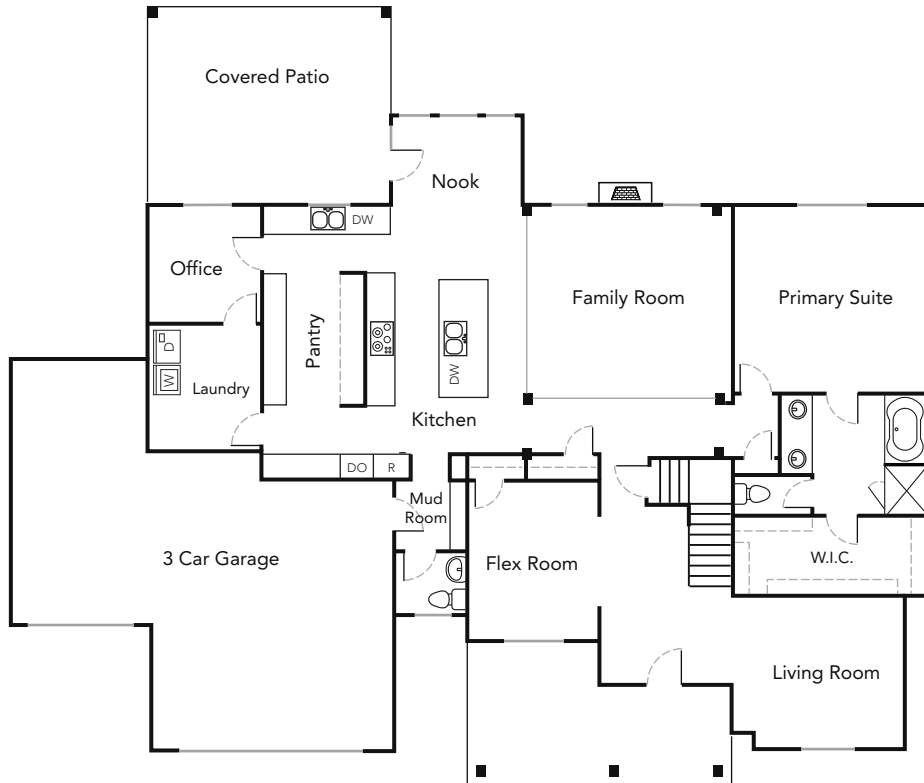
\*All renderings are artists' conception. Continuing a policy of constant design and pricing improvement, we reserve the right of price, product or design change without obligation to notify. Please refer to the base plan for an accurate depiction of the exterior standard features.  
\*Home square footages are approximates and are subject to change.

**SALES: 801.905.8000**

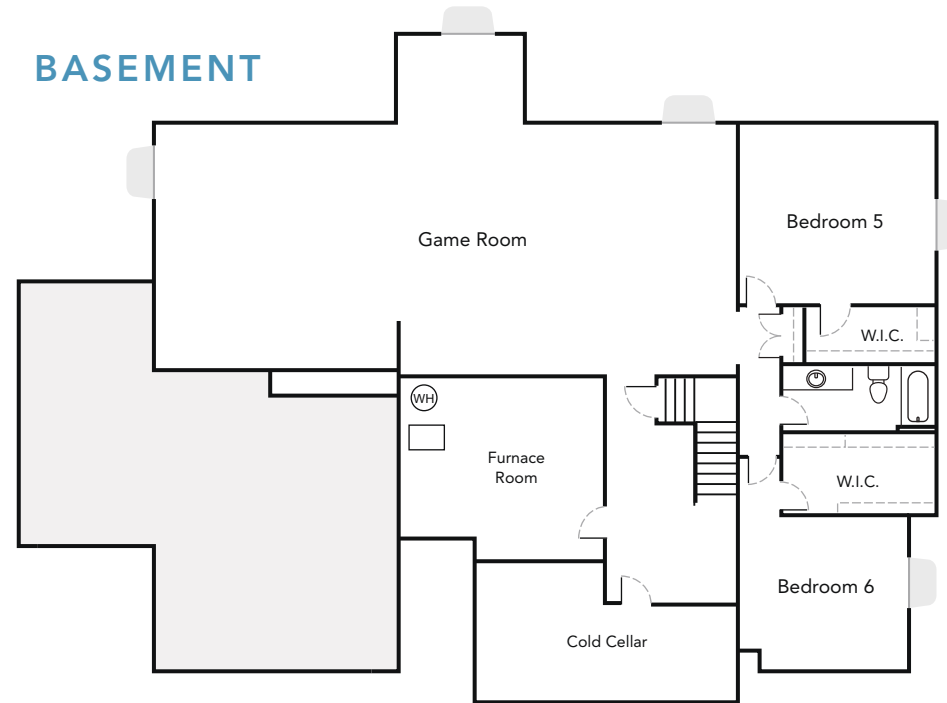
[SYMPHONYHOMES.COM](http://SYMPHONYHOMES.COM)



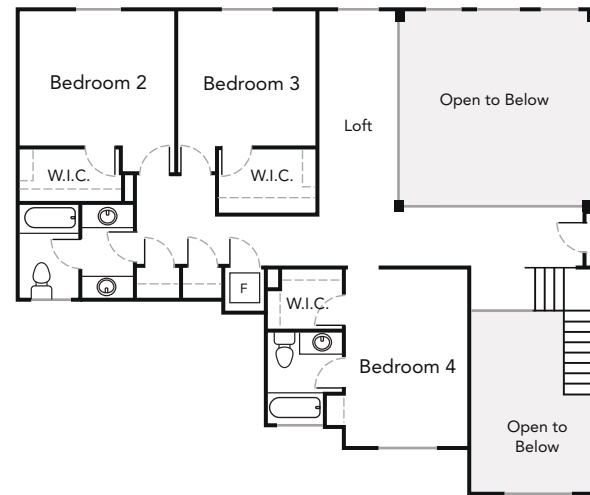
## MAIN LEVEL



## BASEMENT



## UPPER LEVEL



**SQUARE FOOTAGE**

**MAIN: 2651**

**BASEMENT: 2818**

**UPPER: 1313**

**SALES: 801.905.8000**

[SYMPHONYHOMES.COM](http://SYMPHONYHOMES.COM)

\*Home square footages are approximates and are subject to change.